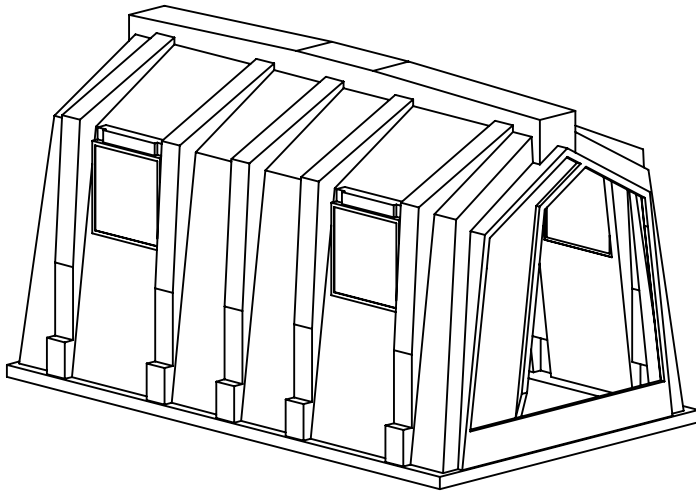


CALF HUTCH FENCING ASSEMBLY INSTRUCTIONS

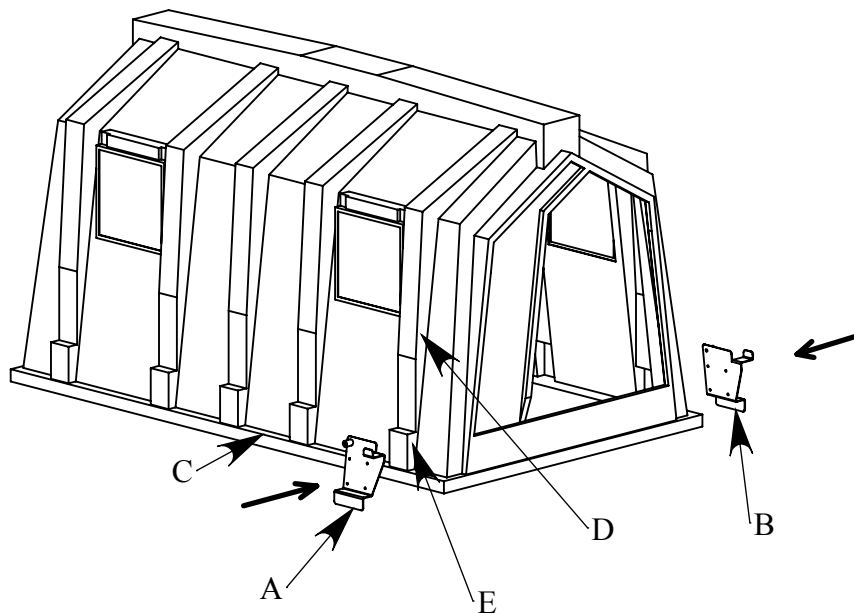
Completely read through assembly instructions before commencing assembly

1



Locate calf hutch on a flat level surface

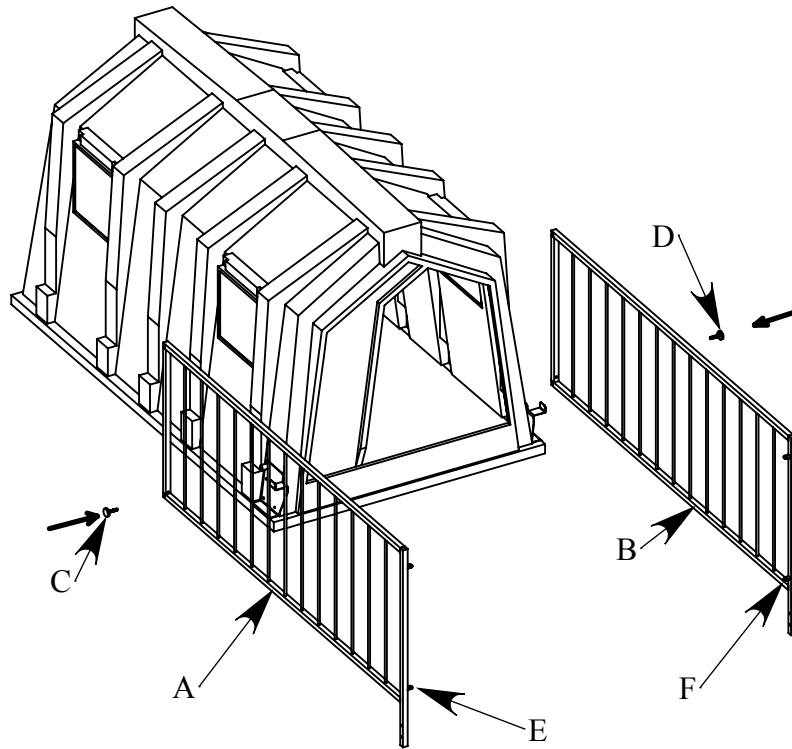
2



Fix bottom left (A) and bottom right (B) side plates

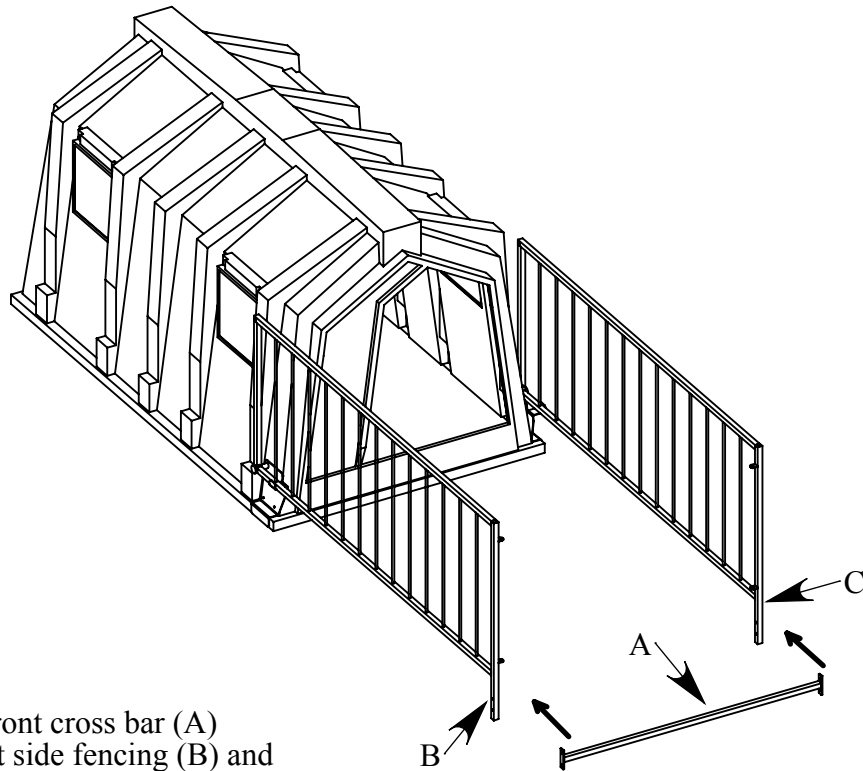
1. Locate bottom left side plate (A) so that it is sitting on the bottom rim (C) and against the angled vertical face (D).
2. Push backwards until it is approx 1 cm from the shoulder (E)
3. Drill 4 holes M6 through the angled face D using the side plate as a drilling guide.
4. Bolt the side plate in place using supplied M6 nuts, bolts and washers.
5. Repeat for bottom right side plate (B)

3



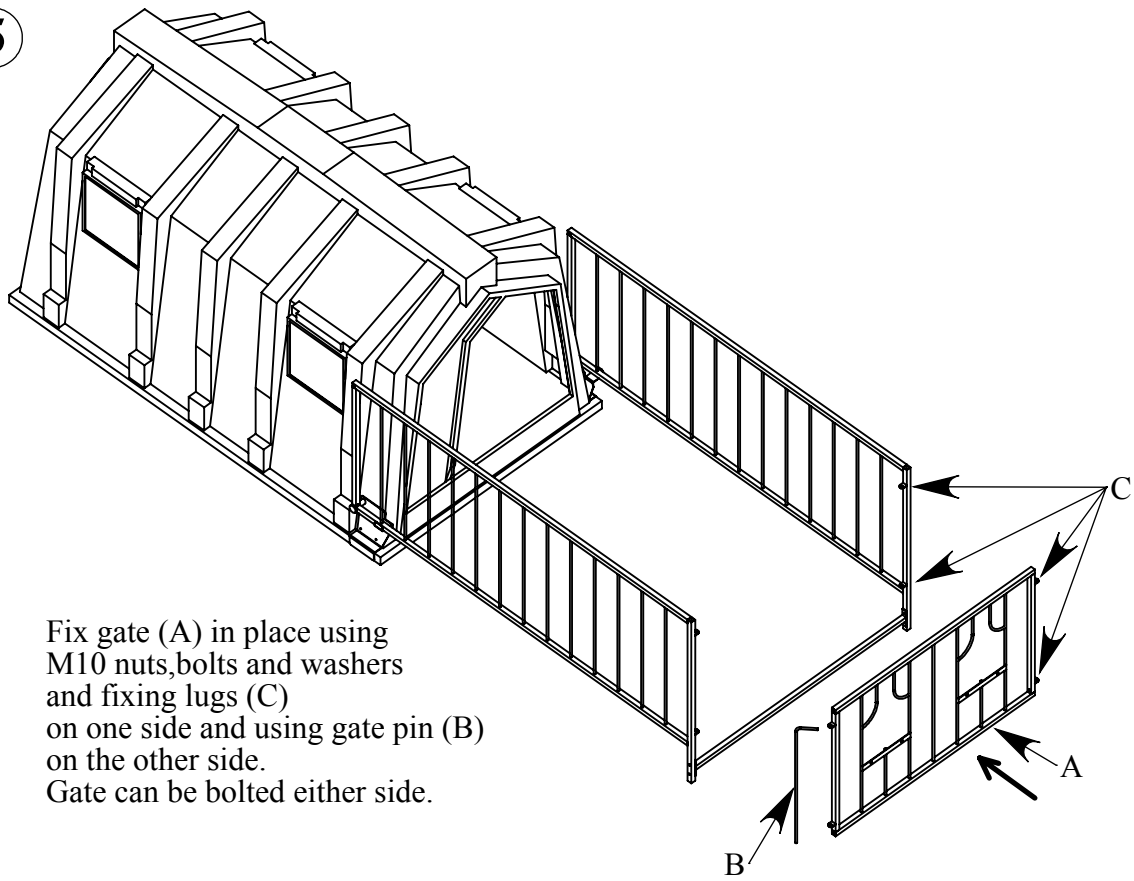
Fix left side (A) and right side (B) fencing in place using threaded fasteners (C&D) screwed into bottom side plates. ENSURE that fixing lugs for gate (E&F) are pointing inwards.

4



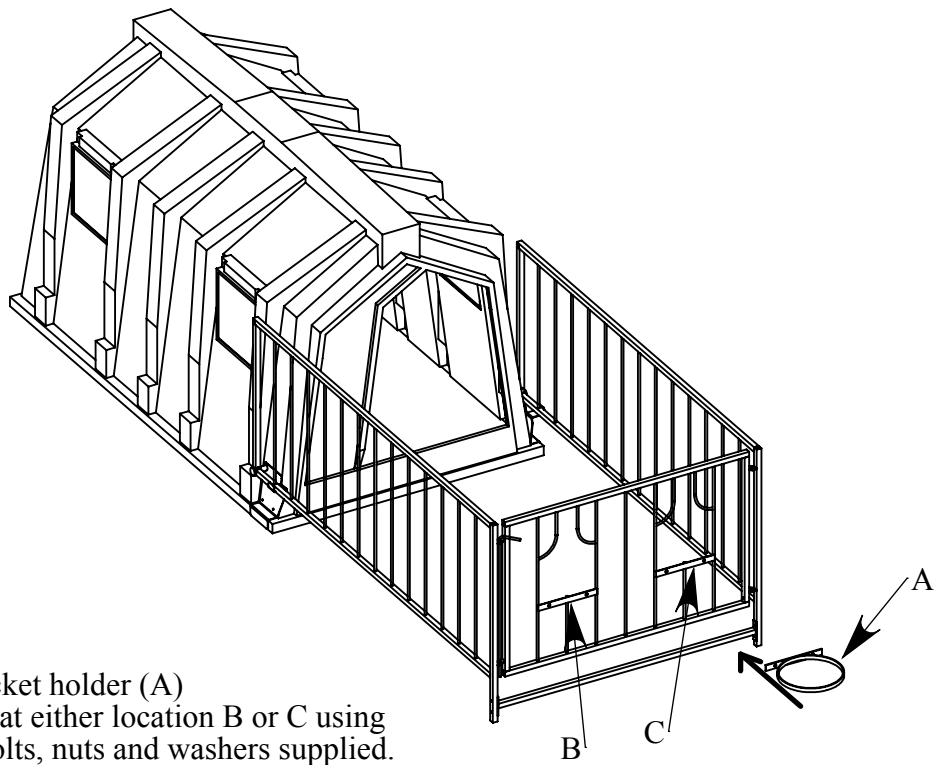
Fix front cross bar (A) to left side fencing (B) and right side fencing (C) using M8 bolts, nuts and washers supplied.

5



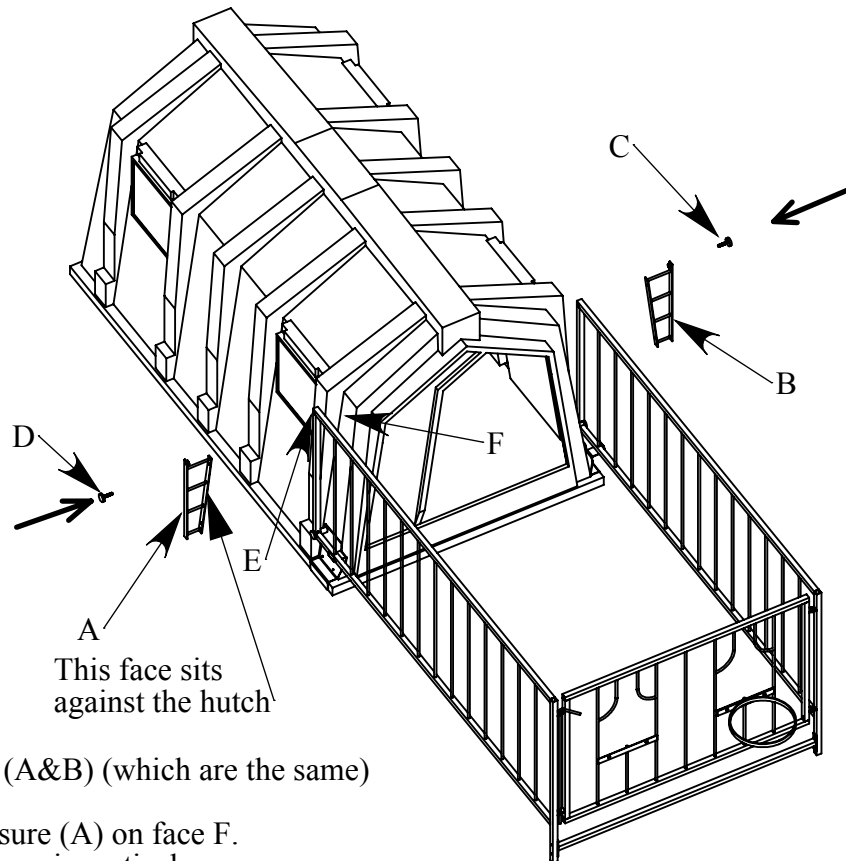
Fix gate (A) in place using M10 nuts, bolts and washers and fixing lugs (C) on one side and using gate pin (B) on the other side. Gate can be bolted either side.

6



Fix bucket holder (A) to gate at either location B or C using M10 bolts, nuts and washers supplied.

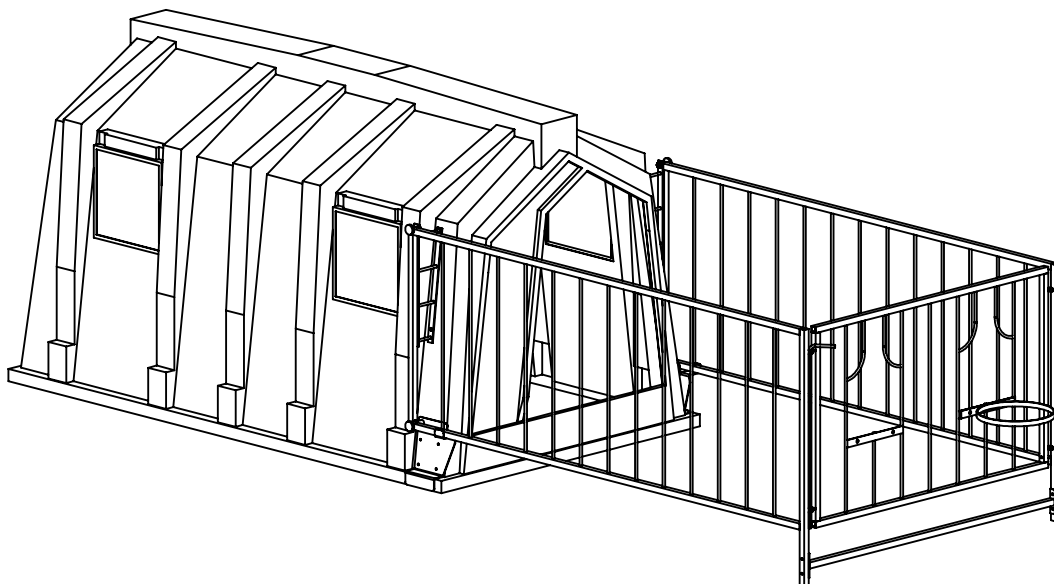
7



Fix side closures (A&B) (which are the same)

1. Sit side closure (A) on face F.
2. Ensure closure is vertical.
3. Insert threaded fastener (D) through hole (E) in side fencing and tighten into threaded hole in closure (A).
4. Holding closure (A) in place against face (F) mark position of closure (A) fixing holes.
5. Remove closure (A) and drill 2 holes diameter 6 mm through face F.
6. Replace closure (A) on face F and bolt in place using M6 bolts, nuts and washers provided.
7. Replace threaded fastener D and tighten.
8. Repeat for other side.

8



COMPLETE